



Aligned with your needs.

DCS TWG User Survey

March 21, 2018





Background

- Spectrum access essential for NOAA's products
 - Weather forecasts, storm warnings, climate monitoring – all data from satellite downlinks
- Pressure on NOAA frequency bands for commercial use
 - AWS Auctions, Ligado Networks, and DISH
- Commercial users must coordinate to deploy assets in NOAA Spectrum
 - Prevent harmful interference and degradation to NESDIS RF spectrum assignments
- NOAA must determine impact of adjacent and in-band spectrum



Spectrum Pipeline Reallocation Engineering Study (SPRES)

- SPRES will specifically address possible reallocation of the 1675 – 1680 MHz band (5 MHz of spectrum) for sharing between the Met-Sat service and AWS nationwide
- Quantify potential impact to NOAAs direct readout users and identify possible techniques to facilitate successful spectrum sharing
 - While ensuring the integrity of the GOES DCPR downlink data



DCS User Survey – Protect your end users

1) Email address *

Your answer _____

2) Name *

Your answer _____

3) Date *

Date

mm/dd/yyyy

4) Phone number *

Your answer _____

5) Work Address

Your answer _____

6) What federal or non-federal agency do you support? *

(ex: NOAA, USGS, NWS, Weather Channel, Weather Underground, Microcom)

Your answer _____

7) Do you have a Direct Readout Ground Station (DRGS)? *

Yes

No

8) If you answered yes to the previous question, please specify each direct readout system you have. (ex: DCS, GRB)

Your answer _____

9) If you do not have a DRGS, what is your primary method for collecting GOES DCS data? *

DCS Administration and Data Distribution System (DADDS)

High Rate Information Transmission (HRIT)

Local Readout Ground Systems (LRGS) via DOMSAT

Local Readout Ground Systems (LRGS) via Internet

DCS Automated Processing System (DAPS) via DOMSAT

Other: _____

10) What type(s) of GOES receiver systems do you have? *

DRGS

HRIT/EMWIN

MDL

GRB

GVAR

Other: _____

11) Who benefits from your GOES DCS data collections? (the end-users or beneficiaries of your data) *

Your answer _____

12) What is the impact to your end-users if your data is missing? *

Your answer _____

13) What are your operational availability requirements? *

(ex. 24/7, only during storms, once a day)

Your answer _____

14) What are your latency requirements? *

Low (< 1 minute)

Moderate (1 - 10 minutes)

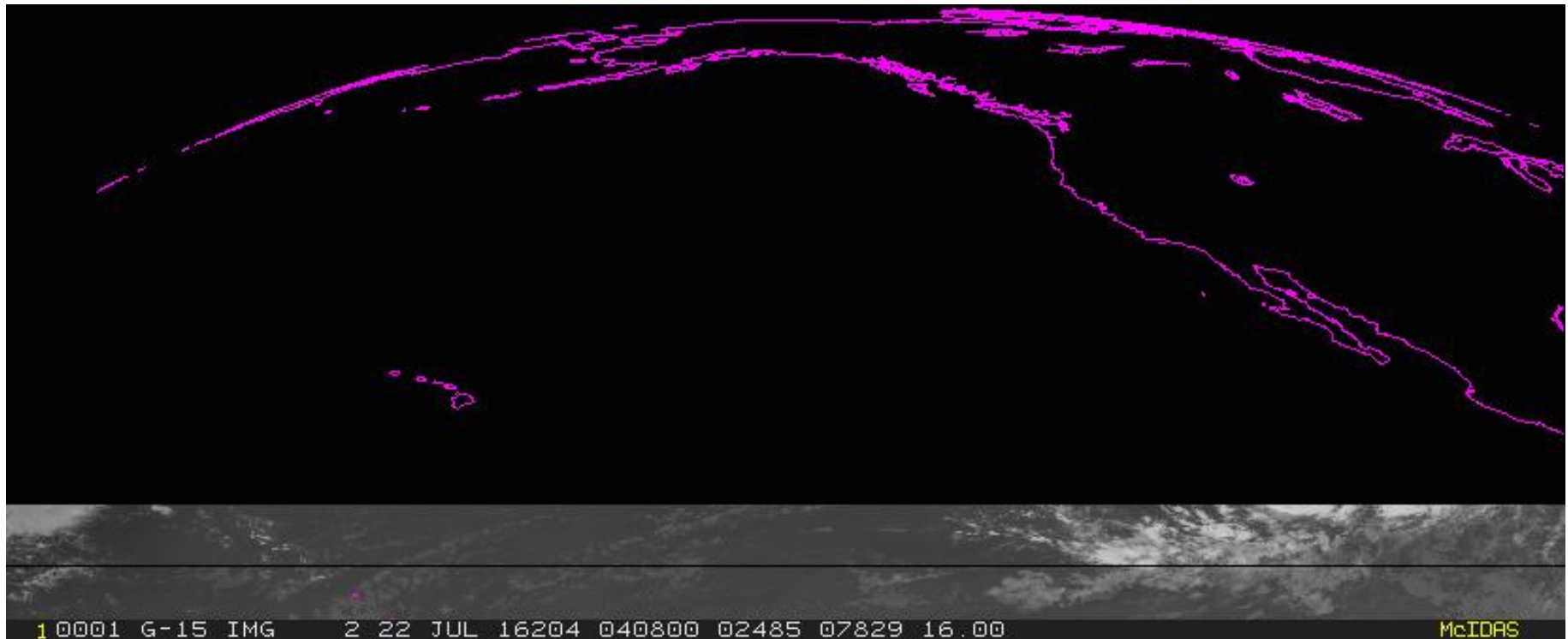
High (10 > minutes)



Due Diligence Prevents Interference

Please help us protect this band by completing the DCS user survey. Instructions on where to complete this survey will be provided to you soon. We would like to have all surveys submitted by May 31, 2018.

[Click Here to complete the DCS user survey](#)





Questions?

