

Manaus, Brazil

# CENSIPAM

Management and Operational Center of the Amazon Protection System



**CENSIPAM**  
Centro Gestor e Operacional do  
Sistema de Proteção da Amazônia



MINISTÉRIO DA  
**DEFESA**

## Boletins do Censipam



**Management and Operational Center of the Amazon Protection System (CENSIPAM), from the Brazilian Ministry of Defense, integrates information and updates knowledge to facilitate the coordination, planning, and execution of government actions in the Legal and the Blue Amazon, aimed at environmental protection and sustainable development**

[www.sipam.gov.br](http://www.sipam.gov.br)



# Flood situation near Madeira River 2025

Flood situation near Madeira River

Flood situation near Madeira River

Porto Velho, Madeira River

Posted 31 minutes ago

Send to phone

Share

Recommended actions

Continue to use caution if going near the riverfront.

Source: [Civil Defense - SGB/CPRM](#)

Info & updates

By tomorrow morning, Madeira River is expected to be the same as early morning today. Continue to use caution if going near the riverfront.

Source: [Civil Defense - SGB/CPRM](#)

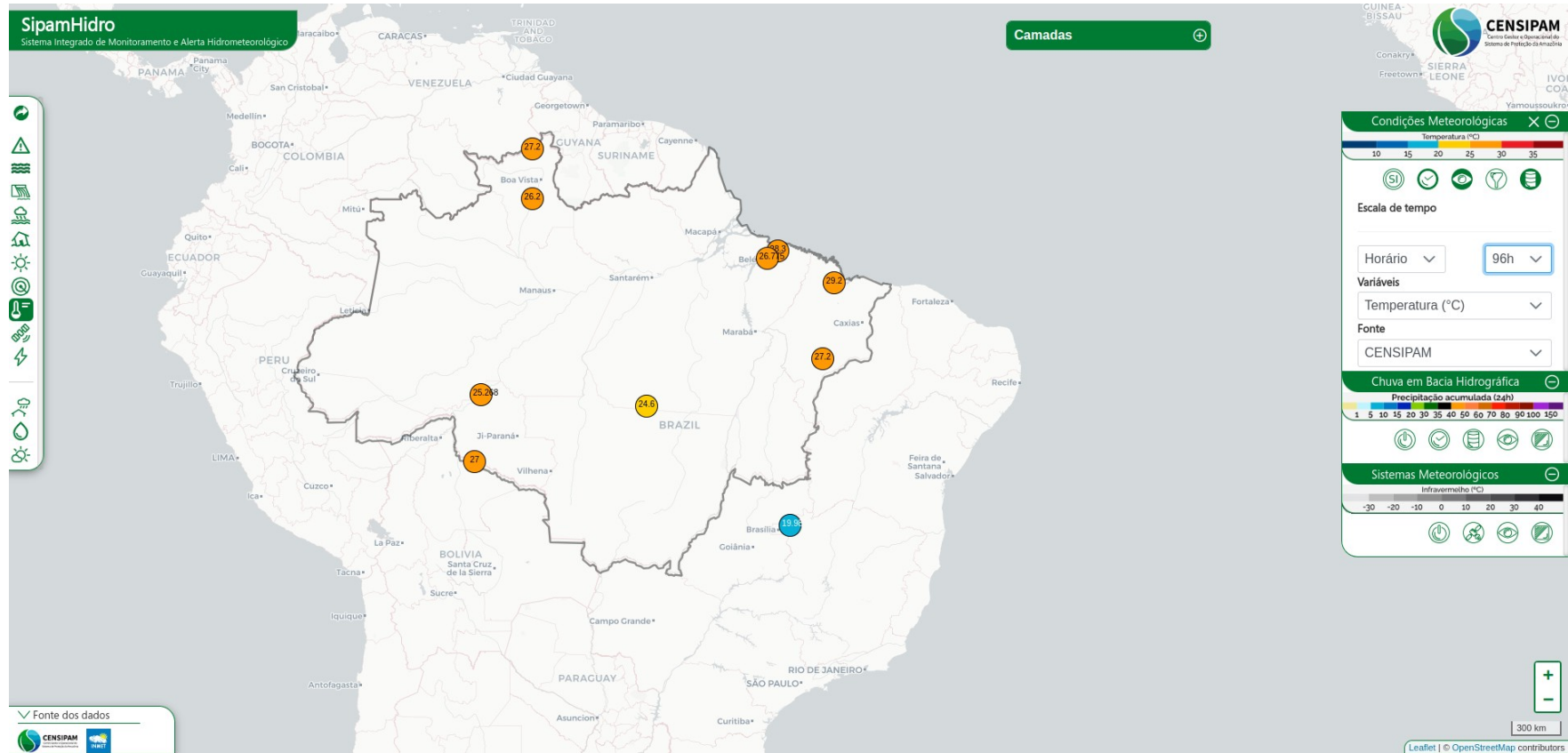
More updates on Google

A map of South America with a red circular icon and the text "Flood situation near Madeira..." in the central region, specifically over the state of Roraima in Brazil. The map shows the borders of various countries including Venezuela, Colombia, Ecuador, Peru, Bolivia, Paraguay, Uruguay, Argentina, Chile, and French Guiana. Major cities like Manaus, Belo Horizonte, and Asunción are labeled. The map also shows the states of Roraima, Amazonas, Pará, Maranhão, Ceará, Piauí, Tocantins, Bahia, Sergipe, Alagoas, Pernambuco, Paraíba, Rio de Janeiro, Espírito Santo, Minas Gerais, São Paulo, Paraná, Santa Catarina, Rio Grande do Sul, Mato Grosso do Sul, Mato Grosso, Rondônia, and Acre.

An aerial photograph showing a large area of flooding. The water is brown and murky, covering a significant portion of the landscape. Several trees and small structures are partially submerged in the water. In the foreground, there are some vehicles and people on a narrow strip of land or a small bridge, suggesting a difficult crossing or a point of observation. The background shows more trees and some distant structures.

<https://tinyurl.com/373cf6bn>

# Amazon Rainforest Dashboard Meteorological



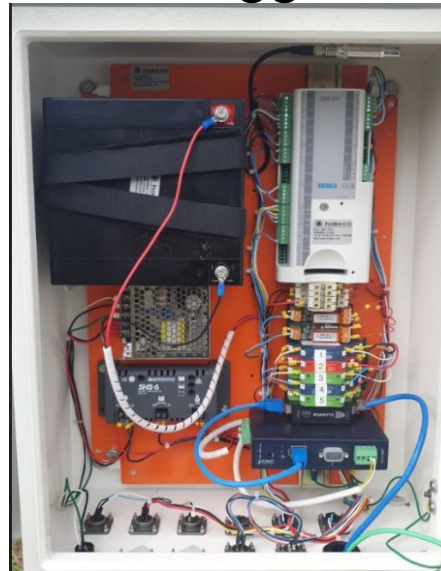
<https://hidro.sipam.gov.br/estacao-meteorologica>

# Link SGDC Satellite (THEN)

## Meteorological Station



## Datalogger



## Ku Band



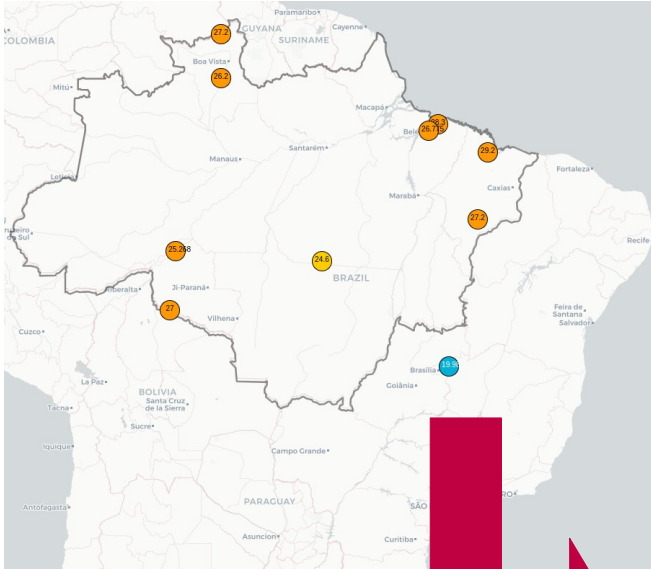
# GOES MODEM (NOW)



<https://dualbase.com.br/>



# Trial Test (Ground Station)



# Vaisala MAWS QML101/QML201

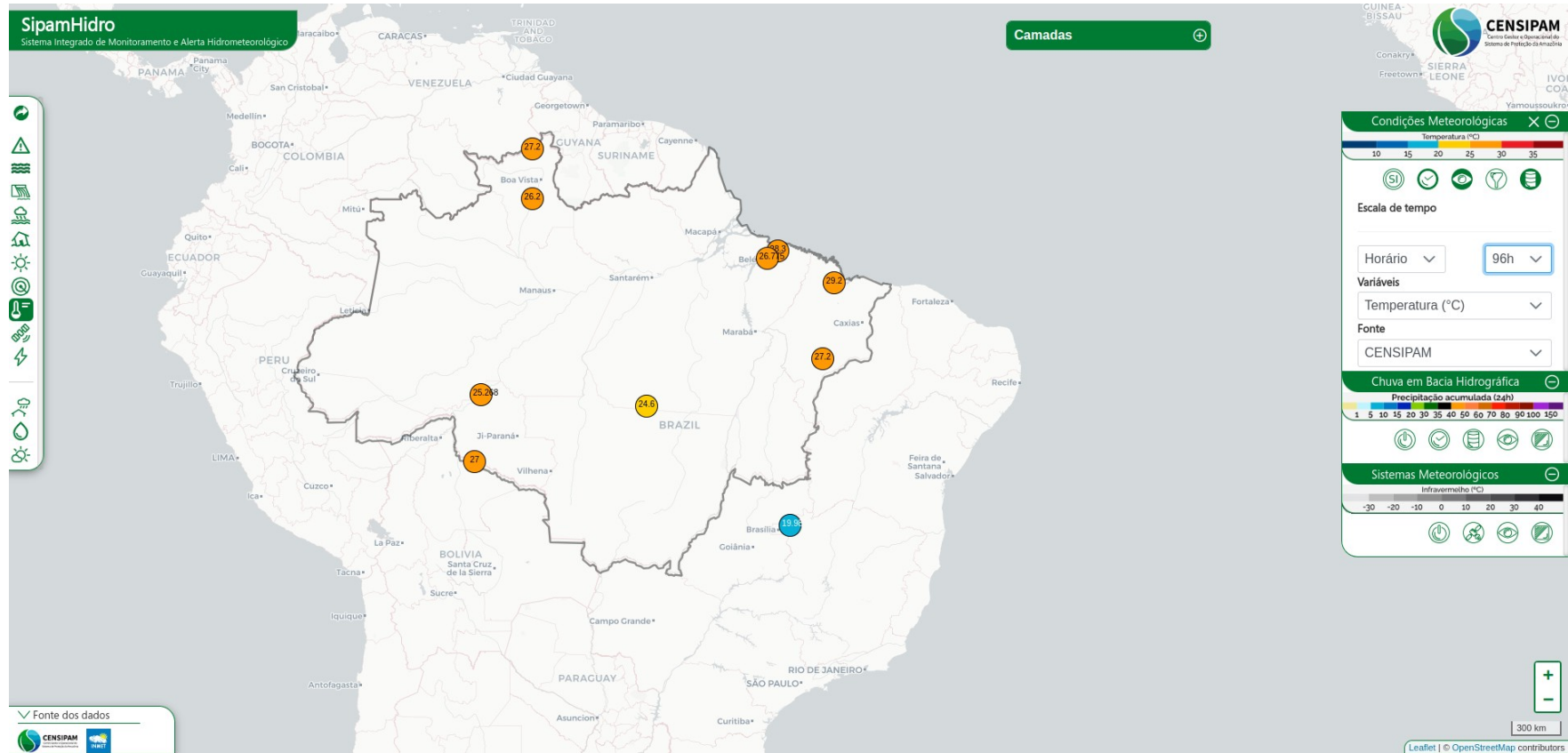




# Vaisala MAWS QML101/QML201



# Amazon Rainforest Dashboard Meteorological



<https://hidro.sipam.gov.br/estacao-meteorologica>



# Thank you!



**CENSIPAM**

Management and Operational  
Center of the Amazon Protection System



**CRISTIANO TORRES DO AMARAL**  
Science and Technology Analyst, PhD.

+55 61 3214-0407  
+55 61 98305-7090 (mobile)  
cristiano.amaral@sipam.gov.br

[www.gov.br/censipam](http://www.gov.br/censipam)  
Sps, área 5, quadra 3, bloco k,  
CEP: 70.610-200 – Brasília – DF

